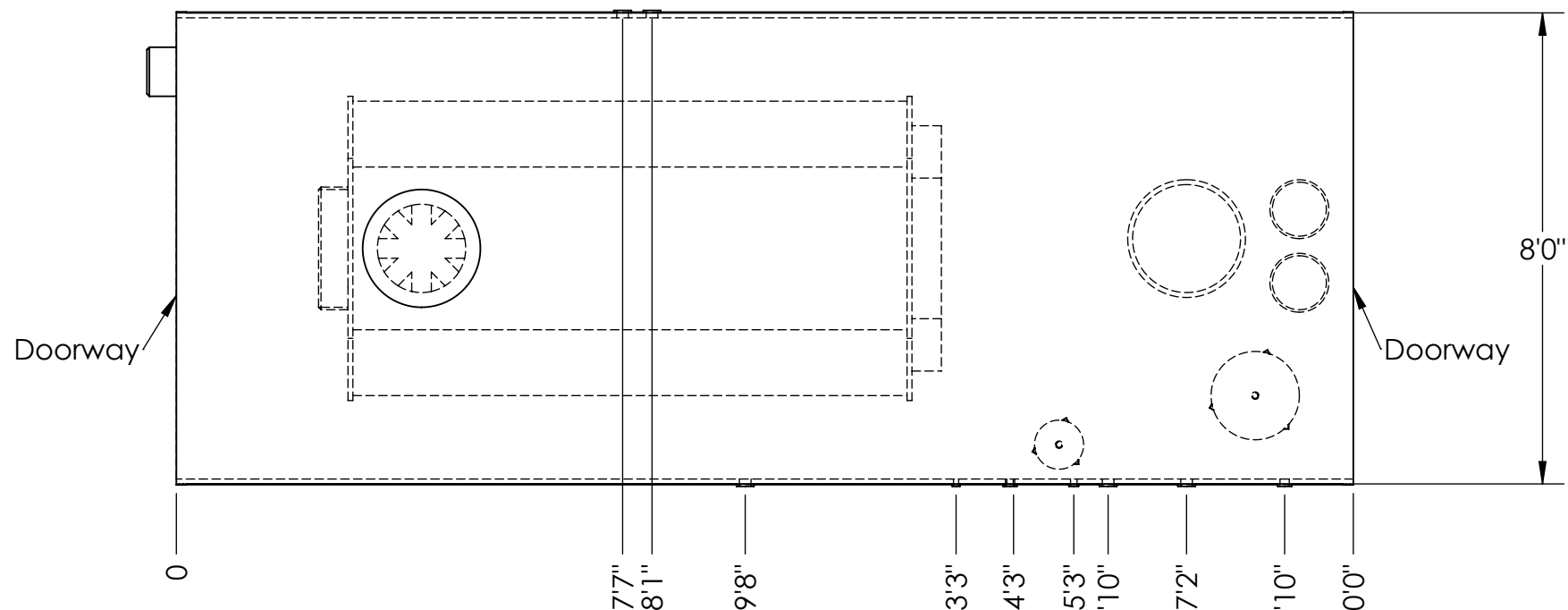
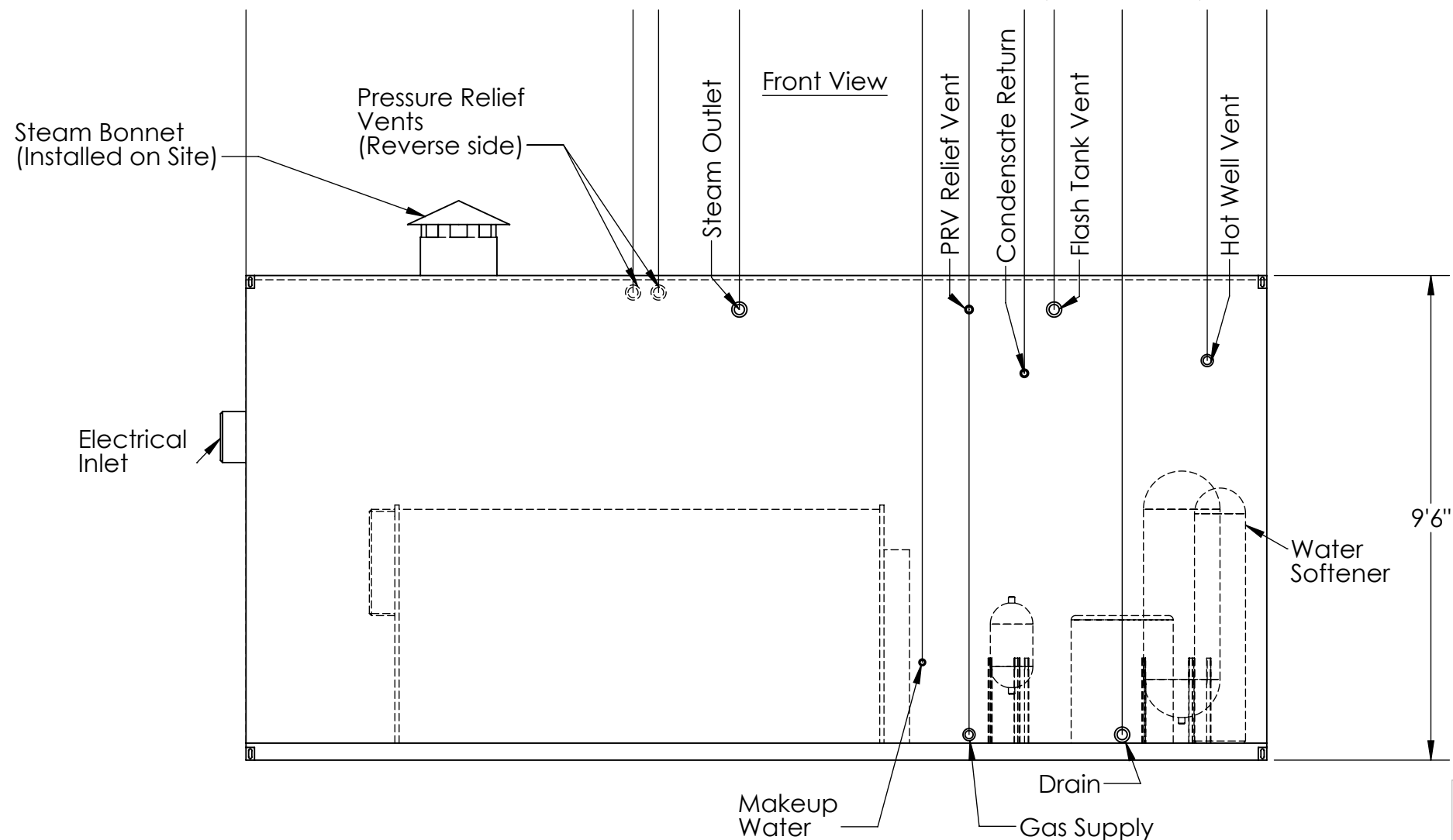


Top View



Front View



Utility Requirements:

Electrical: 480/60/3 30 AMP Or 208/60/3 60 AMP

Fuel: Natural gas regulated at 2-10 PSIG
1,674,000 BTUH

Water: 12 GPM make up water 30 to 70 PSIG

Chemicals:

- A)** PH and sludge conditioner with oxygen scavenger (supplied by customer)
- B)** Pelletized water softener pellets (supplied by customer)

Connections:

- Steam Outlet: 2.00" NPT or 300# Flange
- Condensate Return: 2.00" NPT
- Blowdown Drain: 2.00" NPT
- Water Makeup: 1.00" NPT
- Natural Gas: 1.50" NPT
- Boiler Stack: Stub stack furnished with boiler 18" Diameter

Equipment Includes:

- 40 HP Cleaver Brooks firetube boiler
- Dual 100% capacity B.F. pumps
- Chemical pump
- Modulating feedwater system
- Modulating burner--natural gas
- IRI gas train
- Duplex water softener
- Electrical step-down transformer
- Control panel
- Leveling system
- Blowdown receiver
- Dual steam stop valves
- Operator desk
- Operating hour meter
- Electric unit heater
- Stub stack with bonnet

Safety Equipment:

- Relief valves
- Blowdown aftercooler
- Boiler exit emergency shut-off
- Low water cut-off
- Auxiliary low water cut-off with manual reset
- Redundant B.F. pumps
- Water column blowdown shunt switch
- Fused or circuit breaker protected circuits
- IRI gas train
- Security caged entrance/exits
- Interior electric lights
- Electrical entrance panel lock out disconnect
- Freeze protection electric heaters

Overall Dimensions:
8' x 20' x 9' 6"

Shipping Weight: 16000 lbs
Operating Weight: 20000lbs



Hughes Machinery Company

Size	Description: 1300 #/hr (40 hp) Rental Boiler Plant	
B	8820 Bond Overland Park, KS 66214	Office: (913)-492-0355
	Scale: 1:35	www.hughesmachinery.com