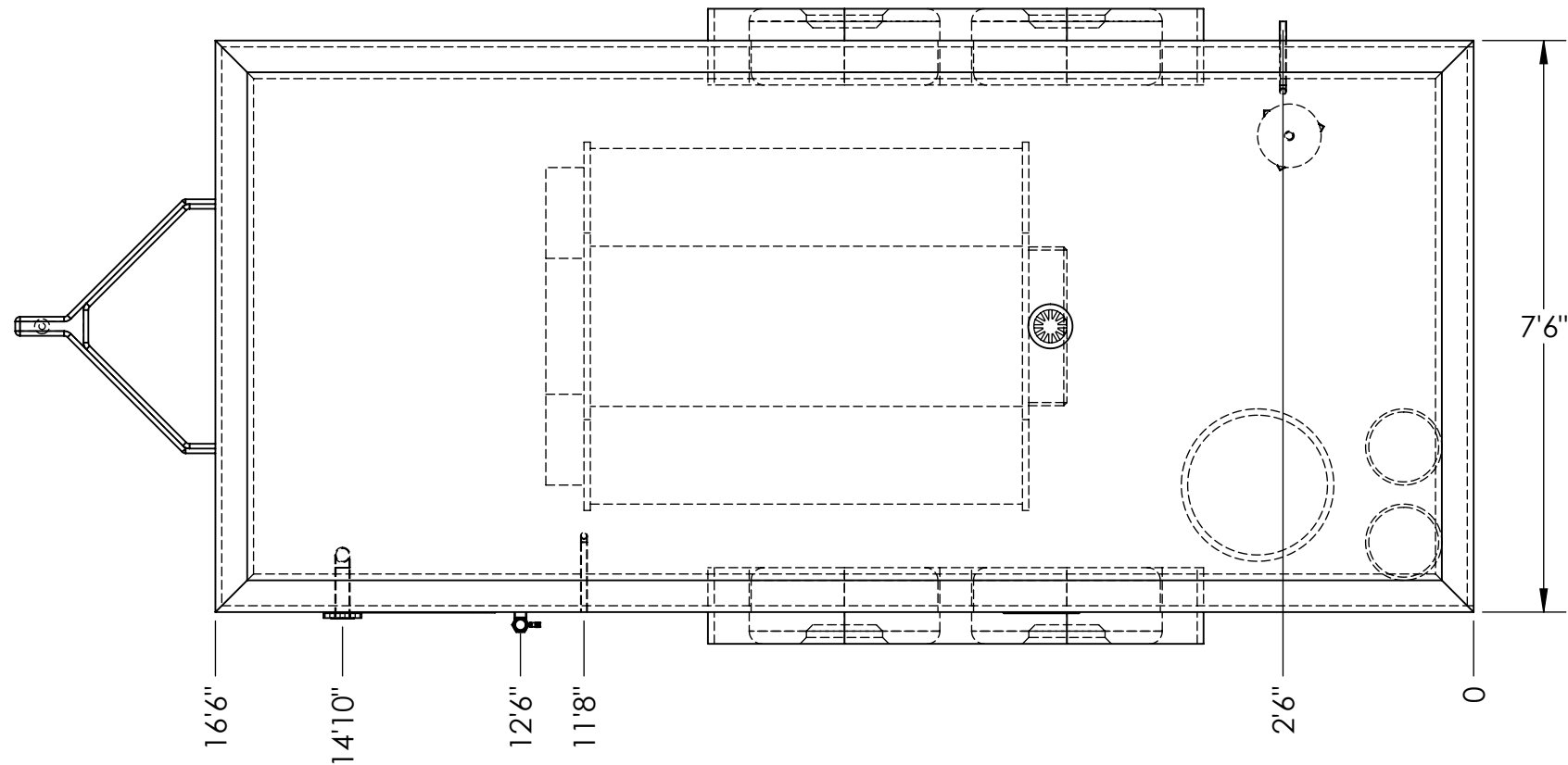
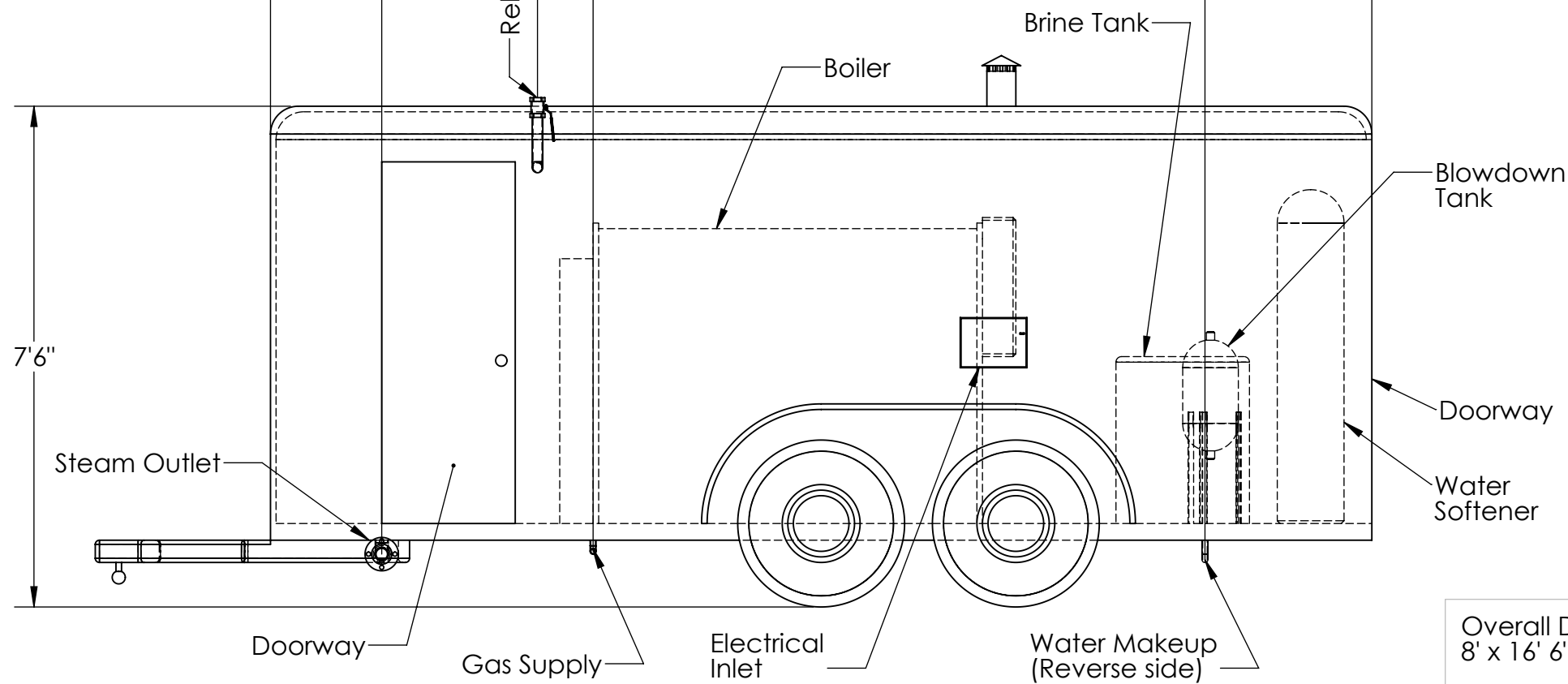


Top View



Front View



Utility Requirements:

Electrical: 110-125/60/1 30 AMP

Fuel: Natural gas regulated at 10-30" 420,000 BTUH

Water: 1 GPM make up water 30 to 70 PSIG

Chemicals:

- A)** PH and sludge conditioner with oxygen scavenger (supplied by customer)
- B)** Pelletized water softener pellets (supplied by customer)

Connections:

Steam Outlet: 2.00" NPT or 300# Flange

Blowdown Drain: .75" NPT

Water Makeup: .75" NPT

Natural Gas: .75" NPT

Boiler Stack: Stub stack furnished with boiler 8" Diameter

Equipment Includes:

- 10 HP Superior firetube boiler
- Dual 100% capacity B.F. pumps
- Chemical pump
- Feedwater system
- Modulating burner--natural gas
- FM gas train
- Duplex water softener
- Control panel
- Blowdown receiver
- Stub stack with bonnet

Safety Equipment:

- Relief valves
- Blowdown aftercooler
- Low water cut-off
- Auxiliary low water cut-off with manual reset
- Redundant B.F. pumps
- Water column blowdown
- Fused or circuit breaker protected circuits
- Interior electric lights

Overall Dimensions:
8' x 16' 6" x 7' 6"

Shipping Weight: 5000 lbs
Operating Weight: 7000lbs



Hughes Machinery Company

Size	Description: 340 #/hr (10 hp) Rental Boiler Plant	
B	8820 Bond Overland Park, KS 66214	Office: (913)-492-0355
	Scale: 1:28	www.hughesmachinery.com